



THE RITZ-CARLTON  
RESIDENCES

الريتز - كارلتون  
ريزيدنسز

RAS AL KHAIMAH, AL WADI DESERT  
رأس الخيمة، صحراء الوادي





*Own a piece of the  
Legend*





THE RITZ-CARLTON  
RESIDENCES

الريتز كارلتون  
ريزيدنسرز

RAS AL KHAIMAH, AL WADI DESERT  
رأس الخيمة، صحراء الوادي

# *In the heart of Al Wadi Desert, Ras Al Khaimah*

Welcome to The Ritz-Carlton Residences, Ras Al Khaimah, Al Wadi Desert. Situated on the stunning al wadi dunes of the northern emirate of Ras al Khaimah, these luxurious residences are designed to offer the perfect combination of modern amenities in the lap of traditional Arabian hospitality. Enjoy breathtaking views of the desert from your terrace with a private pool, take advantage of world-class Ritz Carlton signature services next door.





TABLE OF  
*Contents*

Al Wadi Desert  
08

Life at the Resort  
13

The Residence  
31

Owner Privileges  
71

Contact  
81



# *Ras al Khaimah*

An enchanting destination that offers a truly unique and authentic Arabian experience. Where stunning beaches with pristine white sands are framed by lush mangrove trees and terracotta dunes; while the dramatic Hajar mountains offer awe-inspiring vistas from every angle. What really sets Ras Al Khaimah apart is the genuine Emirati hospitality that awaits you.





## *Al Wadi Desert*

Witness the beauty of the Arabian desert, just north of Dubai. A well kept and cherished secret of the Bedouin experience for thousands of years. Marvel at the endless views of desert sand or explore spectacular mountain regions rich with local culture.



EXPERIENCE THE  
*Unique Flavors*  
OF DESERT



A window into an alluring atmosphere, the seamless design amplifies the natural elements of the wadi. The sights, sounds and smells of the desert to viscerally connect guests to the residences. Earthy tones and delicate textures wrap the villas creating perfect harmony with the desert.



BLURRED BOUNDARIES...  
*Embracing the Desert*



*Bringing the resort lifestyle  
to residences*



## *A place, like no other*

Set within the 1,235-acre Al Wadi Nature Reserve, these luxury residences offer seamless access to the breathtaking desert and its long-standing traditions. Located in a remote corner of Hajar Mountains, this unique destination provides guests with a one-of-a-kind experience that combines modern amenities with traditional Arab hospitality.

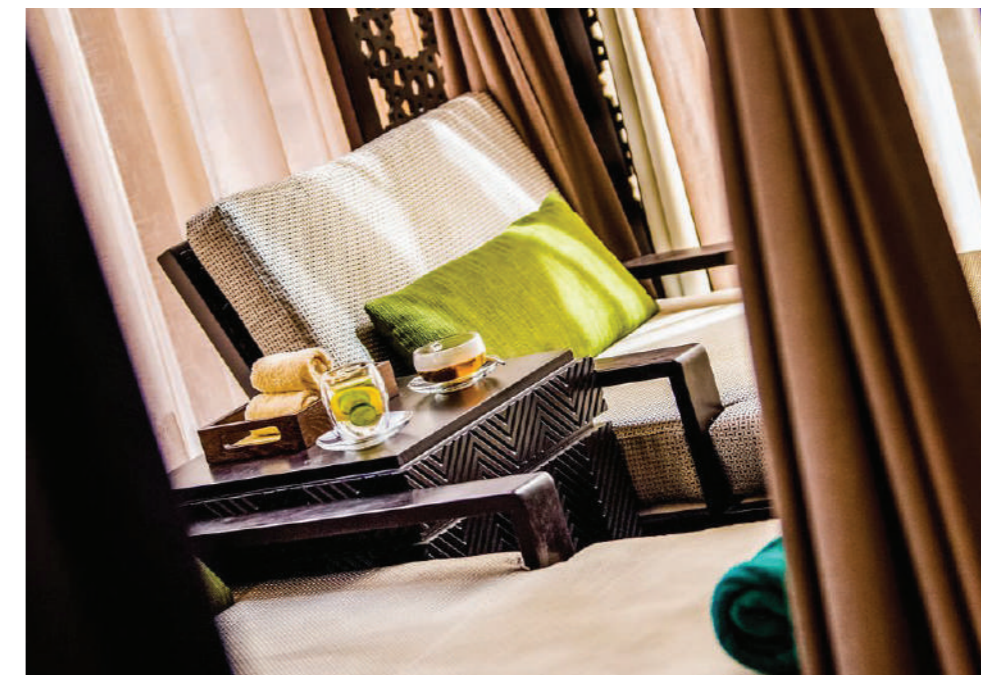








*A healing  
water Oasis*













## *Residents Clubhouse*

Providing cherry-on-the-top experience for resident's social and business needs in extravagant fashion.

Clubhouse is equipped with a mix of entertainment, health and work related facilities such as Gym, Yoga studio, Cinema, Library, Business Centre and Boardrooms to name a few.













OPEN  
*homes*  
OPEN  
*hearts*







## *A desert hideaway*

The Ritz-Carlton Residences, Ras Al Khaimah, Al Wadi Desert offer an unparalleled luxury lifestyle experience. Located over the idyllic dunes of the Wadi, these residences are a world away from everyday life, yet providing all creature comforts with meticulous details. From elegant interiors to stunning views of the desert and beyond, this is truly a one-of-a-kind destination for those who seek only the best in luxury living.



# *Contextual Palette*



Effortless luxury that echoes the distinguished character of The Ritz-Carlton for an unmistakably upscale atmosphere that balances heritage & modernity through color, texture and volume.





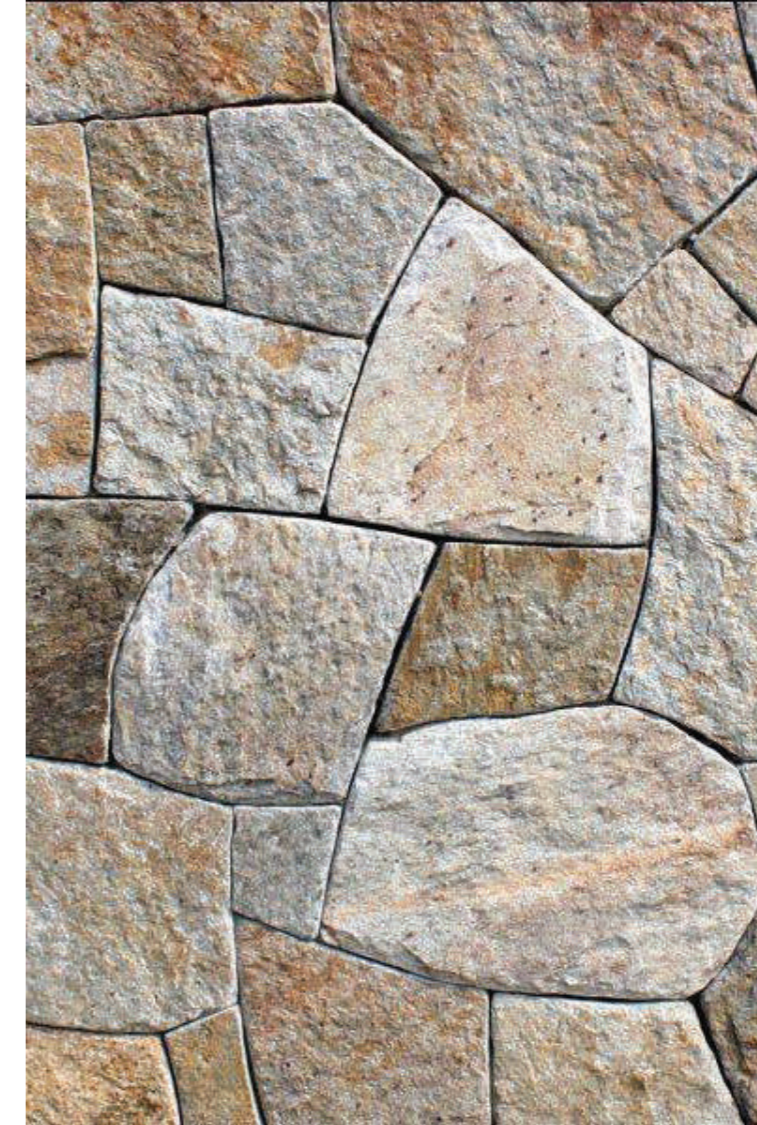




Adorned with inspired material selections from the beautiful desert landscape, while also taking cues from the existing resort. Creating a fine balance of context and contrast to ensure the villas belong while also setting the ambience delicately apart.













# *Not just any modern building*

A window into an alluring atmosphere, this design loudens the visual palette of the desert to viscerally connect residents to the uniquely crafted experience. The concept of iconic landscapes meeting understated and aesthetic architecture is one that defines the modern interior design. By combining form, material, and nature into a single cohesive space, creating an immersive experience that can be both luxurious and enchanting.







*A ballad of sand*





From the comfort of your home enjoy views of beautiful natural scenery while also indulging in well appointed interiors crafted from quality materials. This combination allows for a unique connection to nature without sacrificing luxury or aesthetics; it's truly an ideal blend for those who seek to bring the outdoors inside with them.





A perfect blend of iconic landscapes and upscale architecture with carefully curated interiors. Just perfect enough to fire up our resident's inspiration hungry creative cells at each nook and corner of the villa.

This masterfully crafted space provides complete freedom to shape and design their individuality creating the perfect environment where you feel right at home.















Enhancing the connection to nature from the comfort of a luxurious well appointed interior that seamlessly blends with the surrounding context - immersive and enchanting. Iconic landscapes meet understated & upscale architecture through an interplay of form and matter.





# Masterplan

35 VILLAS

	3 Bed Villas	18 Units
	4 Bed Villas	13 Units
	5 Bed Villas	4 Units
1	New Access Road	
2	Residents Clubhouse	500m <sup>2</sup>
3	Parking	2,000m <sup>2</sup>
4	Buggy Path	







# Clubhouse

## MASTERPLAN

1	New Access Road
2	Residents Clubhouse
3	Parking
4,5	Buggy Path
6	Service Access
7	Valet Station / Driver Room
8	Shaded Porte Cochere / Buggy Parking
9	Clubhouse Garden



# 3, 4 & 5 Bedroom VILLAS

The Residences offer villas in choice of three different layouts – with 3, 4 and 5 bedrooms.

## 3 BEDROOMS VILLA

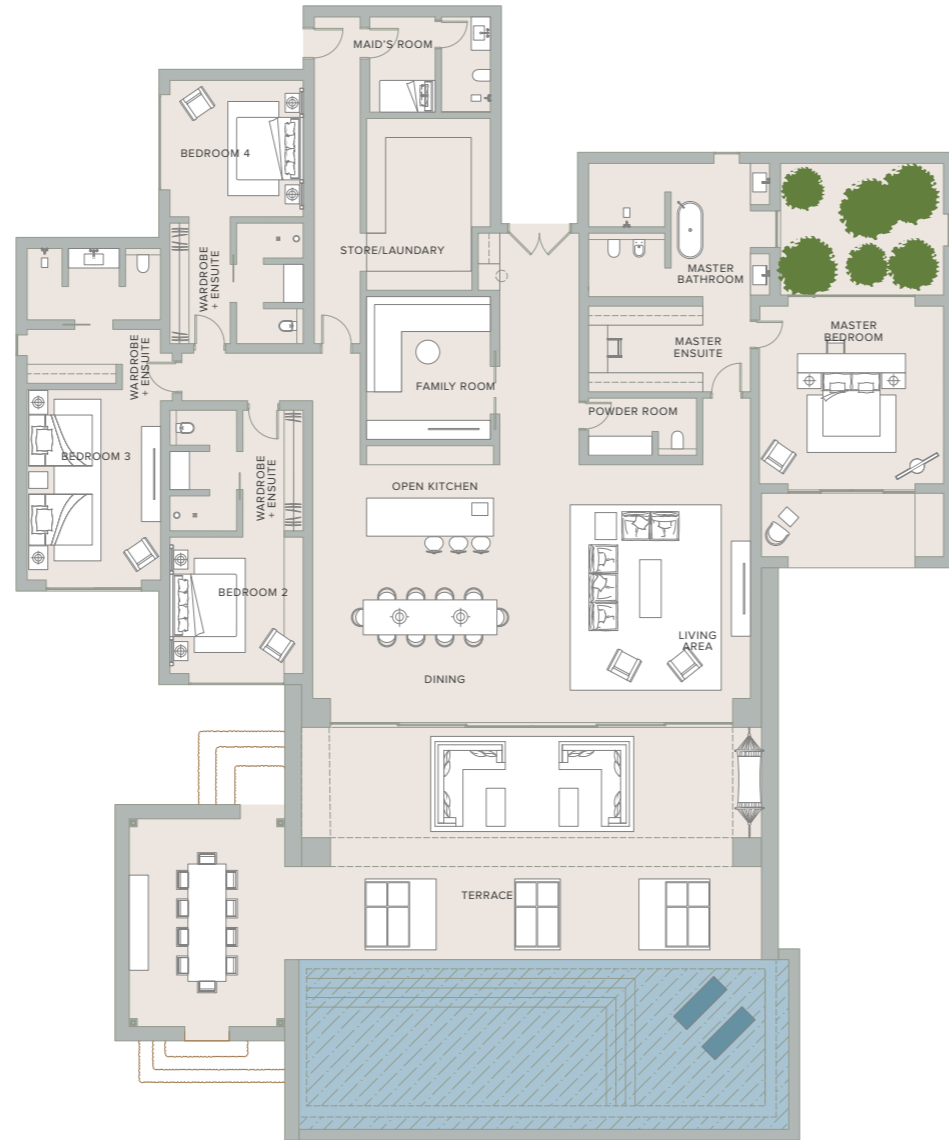
Indoor Area (FOH + BOH)	305 m <sup>2</sup>	3,282 ft <sup>2</sup>
Covered Terrace	105 m <sup>2</sup>	1,130 ft <sup>2</sup>
Uncovered Terraces	117 m <sup>2</sup>	1,259 ft <sup>2</sup>
<b>Total</b>	<b>527 m<sup>2</sup></b>	<b>5,670 ft<sup>2</sup></b>





### 4 BEDROOMS VILLA

Indoor Area (FOH + BOH)	415 m <sup>2</sup>	4,465 ft <sup>2</sup>
Covered Terrace	110m <sup>2</sup>	1,183 ft <sup>2</sup>
Uncovered Terraces	128 m <sup>2</sup>	1,377 ft <sup>2</sup>
<b>Total</b>	<b>653 m<sup>2</sup></b>	<b>7,026 ft<sup>2</sup></b>



### 5 BEDROOMS VILLA

Indoor Area (FOH + BOH)	479 m <sup>2</sup>	5,156 ft <sup>2</sup>
Covered Terrace	86 m <sup>2</sup>	925 ft <sup>2</sup>
Uncovered Terraces	210 m <sup>2</sup>	2,260 ft <sup>2</sup>
<b>Total</b>	<b>775 m<sup>2</sup></b>	<b>8,342 ft<sup>2</sup></b>









# Owner Privileges

You're not a guest, you're at home. And that comes with some extra-special benefits.





# On-Site Services

## RESIDENTIAL OPERATIONS

### Category 1

#### CONCIERGE SERVICES

---

Airline / Private Air Reservations & Airport / Ground Transportation Arrangements

---

Restaurant / Theater & Entertainment Info / Reservations

---

Spa & Salon Reservations

---

Golf Tee Times Reservations

---

Floral Arrangements

---

Activity & Shopping Arrangements/Services Information

---

Car / Limousine Rental & Hotel Reservations

---

Tour Info/Reservations

---

Wake-up Calls & Business Center Services - Fax / Copy / Printing

---

### Category 2

#### HOUSEHOLD & ENGINEERING

---

24 Hour Staffed Privacy

---

Housekeeping Services Daily Cleaning of Common Areas: including Hallways & Corridors, Owner Lounges, Lobby Areas, Offices, Mailroom, Stairwells and Employee Areas

---

Common Area Maintenance / Repair / Prevention / Mechanical

---

Pest Control

---

Pool Cleaning & Maintenance

---

Landscaping of Common Areas including: Grass Cutting, Hedge Trimming, Seasonal Flower PLanting, Blowing and Irrigation

---

### Category 3

#### DOORMAN, BELLMAN, BUTLER

---

Assistance & Delivery of Packages, Mail, Magazine, Newspaper

---

Daily Trash Removal

---

Move-in Logistics & Utilities Coordination

---

Emergency Key Service

---

Programming Key Fobs/Card, Radio Cards / Garage Access

---

### Category 4

#### RECREATION, FITNESS, POOL

---

Daily Cleaning of all Fitness Areas

---

Locker Rooms, Steam and Sauna, Pool

---

Tennis & Recreational Facilities

---

Pool Towels, Refreshment Station - Replace and Replenish as needed

---







# Ala Carte Services

## RESIDENTIAL OPERATIONS

(Hotel or Third Party Provided)

### Category 1 PERSONAL SERVICES

Nanny / Child Care Arrangements

Personal Shopping

Business Equipment Rental

Administrative / Personal Arrangements

Assistant Services

Laundry, Dry Cleaning

Car Washing & Detailing

Computer Technology Assistance

Translation Services

### Category 2 HOUSEHOLD & ENGINEERING

Housekeeping Services Daily, Weekly or As needed; including: Vacuum & Mop Floors, Dust Interior, Strip Beds and Change Sheets, Wash Dishes, Clean Mirrors, Oven/Cooktop Clean, Refrigerator Cleaning and Laundry

Handy-man Services, Minor Electrical, Plumbing, Picture Hanging, Flourescent Tube / Bulb, Replacement Simple Electronic Hook-up, Furniture Assembly, Touch-up paint, HVAC Filter Change, Bulk Trash Removal, Move-In trash Removal

In-Residence Pest Control

Mail & Package Shipping, Arrival Prep, Stocking

### Category 3 EVENT & FOOD SERVICES

Personal Chef

Grocery / Food Delivery

Party, Function & Event Planning

Meeting / Conference Rooms through Hotel

### Category 4 RECREATION

Personal Trainer

In-Residence SPA Treatment / Services





# Hotel Reservation Service

## OWNER RECOGNITION PROGRAM

Hotel Reservation Service

10% off Best Available Rate

Upgrade at Check-in Based upon Availability

Breakfast for Two Daily

4 P.M. Checkout Based on Availability

Welcome Amenity

Special Hotel Amenity

Welcome Note from General Manager

Free Basic High-Speed Wireless Internet Access

EDITION



ST REGIS



RESIDENCES



JW MARRIOTT

THE LUXURY COLLECTION



## THE RITZ-CARLTON RAS AL KHAIMAH, AL WADI DESERT

Within the sanctuary of Wadi Khadeja, The Ritz-Carlton Ras Al Khaimah, Al Wadi Desert offers the chance to experience romance and relaxation, adventure and natural beauty. Located in a 1,235 acre gated private Nature Reserve, the intimate resorts offers 100 private villas with terraces and pools amongst the natural desert landscape. Inspired by Bedouin architecture, feature private outdoor pools and breathtaking desert views.

## THE ARCHITECT

H+A is a boutique architecture and interior design studio based in Dubai, specializing in healthcare, hospitality and lifestyle residential design. H+A follows a design methodology that is research based - striving to understand what a design 'should be' through a sensitivity towards context, culture & environment - with wellness & sustainability at its core. With over a decade of regional experience in hospitality & residential design, they have collaborated with some of the top most developers and hospitality brands.

Their approach to the design of the Ritz Carlton al Wadi Residences seeks to enhance the existing resort DNA, leveraging the unique desert nature reserve and rich cultural heritage of Ras Al Khaimah.



